



STI PERFORMANCE PARTS



SUBARU BRZ (ZC)



STI PERFORMANCE PARTS

Chassis/Body

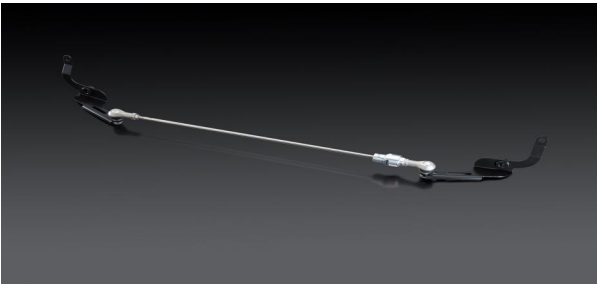


FLEXIBLE TOWER BAR

SG517CA000 (ST20502AS000)

This is a strut tower bar with a completely new concept - splitting an aluminum tower bar in the center and connecting the two pieces with pillow ball joints. As the left and right pieces are flexibly connected, the bar can moderately handle longitudinal forces such as from gaps on the road to maintain ride comfort while strongly holding against lateral forces during cornering. As a result, not only cornering performance but also straight-line stability and ride comfort is improved to enhance the comprehensive performance level of the car.

* Six self-locking nuts (SUBARU genuine part number: 20327CA000) are required for installation.



FLEXIBLE DRAW STIFFENER Rr

ST20168VR000

In addition to increasing the rigidity at the front of the car with the FLEXIBLE V BAR or FLEXIBLE TOWER BAR, we recommend that you also install this product, to improve the followability of the rear of the car together with the FLEXIBLE V BAR or FLEXIBLE TOWER BAR.

By attaching this to the rear ends of the left and right rear frames (inside the rear bumper) and applying moderate tension, it corrects the bending of the chassis when the car is running. This leads to both initial agile steering and a smooth ride.

As this part improves the road-contact of the four wheels, driving stability during cornering increases, and thus a quick and straightforward steering feeling can be realized.

This product comes with a original sticker. (Sticker size: length 41 mm x width 36 mm)

* To install this product, removal and reattachment of the rear bumper face is required.

* The included sticker is a complimentary gift and not sold separately.

Please note that the sticker is not eligible for repair caused by a mistake in applying or damage in its use.

* The images illustrate how this product is installed on the LEVORG (VN type) and SUBARU BRZ (ZD type).

Please note that this product is actually installed inside the bumper and is not visible from the outside.

* On the LEVORG (VM type) this part cannot be installed together with the STI Rear Under Spoiler (part number: SG517VA360, SG517VA310) because the mounting location is the same.

* Cannot install together with other products(Ex. Hitch member) which attaches to the bumper beam.



STI PERFORMANCE PARTS

Chassis/Body



FLEXIBLE V BAR

ST20502AS020

This STI performance part comes as standard equipment in the 2015 model of SUBARU BRZ tS, an STI complete car. Compared to the type that was equipped in the 2013 model of the same car, this product reduces the time required for the power transmission from the beginning of the steering operation to V-bar by approximately 22%, the yaw response time of the vehicle by approximately 42%, and the lateral G-force response by approximately 31%*. Also, during a slalom-like maneuver resembling a sequence of corners, the product increases the average vehicle speed by 1.4%* compared to the previous models, and allows you to follow your driving line more easily and more safely. When compared with the rigid V-bar in standard models, this product comes with a pillow ball inserted on the left and right sides of the bar to maintain a level of rigidity necessary for comfortable handling and smoothly absorb vibrations. To use this product, simply replace the standard V-bar with it.

*STI test values

* Although it is possible to install this part along with the flexible tower bar, this may lead to increased transmission of fine vibration.



FLEXIBLE DRAW STIFFENER F

ST20118AS000

This STI original sports performance part applies moderate tension between the vehicle body and cross member to prevent the chassis from bending when you drive the vehicle. This results in agile and responsive initial steering, as well as a comfortable ride. The vehicle will boast better grip on all four wheels, improved stability when cornering, and also fast and responsive steering performance.

* This product was designed under the assumption that the STI flexible tower bar (Part No. ST20502AS000) or flexible V bar (Part No. ST20502AS020) is also mounted on the vehicle.

* As this part is mounted inside the under cover, the damper mounting position will vary between the left and right sides.



SUB FRAME BUSH

ST20174AS000

This product provides increased rubber bushing and mount hardness in the chassis. It effectively suppresses elastic deformation to reduce losses in power and torque transmission. It delivers snappy response for steering and throttle operation.

No. required/vehicle: 4

* This product is targeted toward owners who do sports driving or competitive motor sports such as one-make racing and gymkhana. Vibration and noise may be increased during regular driving.



STI PERFORMANCE PARTS

Chassis/Body



STEERING GEAR BOX BUSH

ST34112AS000

This product provides increased rubber bushing and mount hardness in the chassis. It effectively suppresses elastic deformation to reduce losses in power and torque transmission. It delivers snappy response for steering and throttle operation.

No. required/vehicle: 2

* This product is targeted toward owners who do sports driving or competitive motor sports such as one-make racing and gymkhana. Vibration and noise may be increased during regular driving.



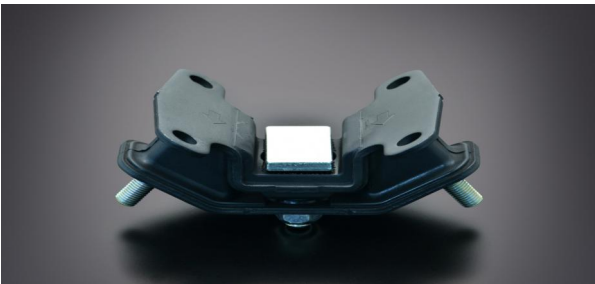
ENGINE MOUNT

ST41022AS000 ENGINE MOUNT RH RH

ST41022AS010 ENGINE MOUNT LH LH

This product provides increased rubber bushing and mount hardness in the chassis. It effectively suppresses elastic deformation to reduce losses in power and torque transmission. It delivers snappy response for steering and throttle operation.

* This product is targeted toward owners who do sports driving or competitive motor sports such as one-make racing and gymkhana. Vibration and noise may be increased during regular driving.



MISSION MOUNT

ST41020AS000

This product provides increased rubber bushing and mount hardness in the chassis. It effectively suppresses elastic deformation to reduce losses in power and torque transmission. It delivers snappy response for steering and throttle operation.

* This product is targeted toward owners who do sports driving or competitive motor sports such as one-make racing and gymkhana. Vibration and noise may be increased during regular driving.

Chassis/Body

**DIFF BUSH**

ST41322AS000 DIFF BUSH R RH
ST41322AS010 DIFF BUSH R LH

This product provides increased rubber bushing and mount hardness in the chassis. It effectively suppresses elastic deformation to reduce losses in power and torque transmission. It delivers snappy response for steering and throttle operation.

* This product is targeted toward owners who do sports driving or competitive motor sports such as one-make racing and gymkhana. Vibration and noise may be increased during regular driving.



STI PERFORMANCE PARTS

Suspension



COIL SPRING

ST20330AS000 F
ST20380AS000 R

The specifications for this product are based on repeated and thorough driving tests, to achieve the best match with standard genuine damper. The center of gravity has been lowered without compromising passenger comfort, whereas the design and structure of the product ensure high driving stability. The vehicle height is 15 mm lower compared to standard models to reduce roll and give the SUBARU BRZ model a more sporty look.

* Please be aware that each vehicle requires two units in both the front and the rear.

* For standard front struts.

* If they are installed on a different model, it may upset the front/rear balance. Do not install on a non-compatible model.

* Vehicle height is reduced by approximately 15 mm from the standard height (when the car is empty). However, the change in car height might vary depending on optional accessories installed and individual differences in car bodies and parts.



STRUT F

ST20310AS040 RH
ST20310AS050 LH

These suspension parts are used with the STI original suspension system developed in cooperation with Bilstein in Germany. They allow you to tune your SUBARU BRZ for a more robust and smooth ride. The kit includes left and right front struts, rear shock absorbers, and front/rear coil springs. The front uses the tried-and-trusted inverted strut for a high level of rigidity, and lowers the vehicle height by approximately 15 mm. In particular, this increases the body judder convergence of the car when it enters a corner to maintain highly reliable roll characteristics. In addition to improving driving stability, this product also ensures comfortable steering.

* The use of this kit first requires a total tuning and then installation as a damper kit. Installation of individual parts only will not achieve the performance proposed by STI. It is recommended that the entire kit be installed all at once.

Strut F RH: ST20310AS040 x 1

Strut F LH: ST20310AS050 x 1

Shock Absorber R: ST20365AS020 x 2

Coil Spring F: ST20330AS010 x 2

Coil Spring R: ST20380AS020 x 2



STI PERFORMANCE PARTS

Suspension



SHOCK ABSORBER R

ST20365AS020

These suspension parts are used with the STI original suspension system developed in cooperation with Bilstein in Germany. They allow you to tune your SUBARU BRZ for a more robust and smooth ride. The kit includes left and right front struts, rear shock absorbers, and front/rear coil springs. The front uses the tried-and-trusted inverted strut for a high level of rigidity, and lowers the vehicle height by approximately 15 mm. In particular, this increases the body judder convergence of the car when it enters a corner to maintain highly reliable roll characteristics. In addition to improving driving stability, this product also ensures comfortable steering.

* The use of this kit first requires a total tuning and then installation as a damper kit. Installation of individual parts only will not achieve the performance proposed by STI. It is recommended that the entire kit be installed all at once.

Strut F RH: ST20310AS040 x 1
 Strut F LH: ST20310AS050 x 1
 Shock Absorber R: ST20365AS020 x 2
 Coil Spring F: ST20330AS010 x 2
 Coil Spring R: ST20380AS020 x 2



COIL SPRING

ST20330AS010 F

ST20380AS020 R

These suspension parts are used with the STI original suspension system developed in cooperation with Bilstein in Germany. They allow you to tune your SUBARU BRZ for a more robust and smooth ride. The kit includes left and right front struts, rear shock absorbers, and front/rear coil springs. The front uses the tried-and-trusted inverted strut for a high level of rigidity, and lowers the vehicle height by approximately 15 mm. In particular, this increases the body judder convergence of the car when it enters a corner to maintain highly reliable roll characteristics. In addition to improving driving stability, this product also ensures comfortable steering.

* The use of this kit first requires a total tuning and then installation as a damper kit. Installation of individual parts only will not achieve the performance proposed by STI. It is recommended that the entire kit be installed all at once.

Strut F RH: ST20310AS040 x 1
 Strut F LH: ST20310AS050 x 1
 Shock Absorber R: ST20365AS020 x 2
 Coil Spring F: ST20330AS010 x 2
 Coil Spring R: ST20380AS020 x 2



STI PERFORMANCE PARTS

Suspension



LATERAL LINK SET

ST20250ZR000

Set of 4 lateral links with pillow ball bushes. By changing the rubber bush inside a lateral link to a pillow ball bush, friction is reduced and caliper rigidity improved during a stroke, sharp handling is achieved during cornering, and linear suspension features from entering until exiting a turn are achieved. Pillow ball bushing (2 x 2 locations), press fitted.



TRAILING LINK SET

ST20250AS000

Replacing the rubber bushing part with a pillow ball allows the rear link mechanism to operate smoothly. This not only improves road gripping performance when cornering, but also effectively transmits traction to the road surface when the accelerator is depressed due to the increased rigidity. In combination with a lateral link (ST20250ZR000), which is already commercially available, this product can provide the car with more linear suspension characteristics. *Pillow ball bushing (2 x 1 location), press-fitted



STI PERFORMANCE PARTS

Wheel



WHEEL SET 17inch(SILVER/GUNMETALLIC/BLACK)

SG217CA000 PT SILVER 17x7J+48 PCD100 5HOLES
 SG217CA010 GUNMETALLIC 17x7J+48 PCD100 5HOLES
 SG217CA020 BLACK 17x7J+48 PCD100 5HOLE

These cast aluminum wheels were made using the spinning production process to form the shape of the rims. This ensures a reduced weight with increased rigidity. Their design with 15 straight spokes perfectly matches the body design and its colours.

* The spinning process is a special method for producing aluminum wheels. It involves rapidly rotating the workpiece and pressing it until it conforms to the desired shape. This causes the aluminum molecules to be in close contact with each other, increasing strength while reducing weight and thickness.



WHEEL SET 17inch(SILVER/GUN METALLIC/BLACK)

ST28100MF050 PT Silver 17x7.5J+48 PCD100 5HOLE
 ST28100MF060 GUNMETALLIC 17x7.5J+48 PCD100 5HOLE
 ST28100MF080 BLACK 17x7.5J+48 PCD100 5HOLE

These cast aluminum wheels were made using the spinning production process to form the shape of the rims. This ensures a reduced weight with increased rigidity. Their design with 15 straight spokes perfectly matches the Forester/SUBARU BRZ body design and its colours.

* The spinning process is a special method for producing aluminum wheels. It involves rapidly rotating the workpiece and pressing it until it conforms to the desired shape. This causes the aluminum molecules to be in close contact with each other, increasing strength while reducing weight and thickness.

* Compatible with Brembo 4POT calipers



WHEEL SET 18inch(SILVER/GUN METALLIC/BLACK)

ST28100MF250 SILVER 18x7.5J+48 PCD100 5HOLE
 ST28100MF260 GUN METALLIC 18x7.5J+48 PCD100 5HOLE
 ST28100MF280 BLACK 18x7.5J+48 PCD100 5HOLE

These cast aluminum wheels were made using the spinning production process to form the shape of the rims. This ensures a reduced weight with increased rigidity. Their design with 15 straight spokes perfectly matches the Forester/SUBARU BRZ body design and its colours.

* The spinning process is a special method for producing aluminum wheels. It involves rapidly rotating the workpiece and pressing it until it conforms to the desired shape. This causes the aluminum molecules to be in close contact with each other, increasing strength while reducing weight and thickness.

* Compatible with Brembo 4POT calipers



STI PERFORMANCE PARTS

Wheel



STI PERFORMANCE WHEEL Set BBS 18inch 7.5J (MAT GREY)

ST28100ZM000 MAT GREY

Incorporating the wheel development concept cultivated in motorsports, this forged aluminum one-piece wheel has been tuned exclusively for the new SUBARU BRZ.

Carrying over the same design as the wheel used in the actual races of SUPER GT, Japan's top motorsport category, this product is available in two colors - matte bronze and matte gray.

This product has fully inherited the functionality and reliability in extreme conditions including the adoption of an anti-slip paint that suppresses wheelspin and the steel bushes, making it suitable for the SUBARU BRZ.

With this forging method a significant weight reduction has been achieved, contributing to improved steering response.

* Center cap and air valve included



STI PERFORMANCE WHEEL Set BBS 18inch 7.5J (MAT BRONZE)

ST28100ZM010 MAT BRONZE

Incorporating the wheel development concept cultivated in motorsports, this forged aluminum one-piece wheel has been tuned exclusively for the new SUBARU BRZ.

Carrying over the same design as the wheel used in the actual races of SUPER GT, Japan's top motorsport category, this product is available in two colors - matte bronze and matte gray.

This product has fully inherited the functionality and reliability in extreme conditions including the adoption of an anti-slip paint that suppresses wheelspin and the steel bushes, making it suitable for the SUBARU BRZ.

With this forging method a significant weight reduction has been achieved, contributing to improved steering response.

* Center cap and air valve included.



STI VALVE CAP SET(Black)

ST28102Z2000 Black

These wheel valve caps are light weight with a design that features a knurled finish on machined aluminum to prevent slippage. Remove the standard valve caps to install these. A black alumite treatment has been applied to the surfaces of these valve caps to improve resistance to weather and match the color of aluminum wheels. The hexagonal heads of the valve caps have rounded tops, and a cherry red STI logo is stamped on the embossed area.

- 4-piece Set
- Black Alumite Treatment

*When storing tires and wheels, we recommend that valve caps be stored separately to prevent sticking.



STI PERFORMANCE PARTS

Wheel



STI VALVE CAP SET

ST28102ST030 Silver

These wheel valve caps are light weight with a design that features a knurled finish on machined aluminum to prevent slippage. Remove the standard valve caps to install these. A silver alumite treatment has been applied to the surfaces of these valve caps to improve resistance to weather and match the color of aluminum wheels. The hexagonal heads of the valve caps have rounded tops, and a cherry red STI logo is stamped on the embossed area.

- 4-piece Set
- Silver Alumite Treatment

*When storing tires and wheels, we recommend that valve caps be stored separately to prevent sticking.



SECURITY WHEEL NUT SET

ST28170ST060 GUN METALLIC

Set of 16 lug nuts and 4 lock nuts. Enhanced security with a more reliable locking mechanism. 3-layer nickel plated hard steel, with chrome finish to prevent rust. Gun metal finish with laser engraved STI logo. Special tool included (McGuard). M12x1.25mm

STI PERFORMANCE PARTS

Aero/Exterior



FRONT UNDER SPOILER

SG517CA100 (E2410CA000, ST96020AS000) BLACK

This aerodynamic plastic spoiler is installed under the front bumper. It controls the flow of air into the front of the vehicle when driving at high speed and generates negative lift to increase the road gripping ability of the front tires. It has been designed to fit seamlessly with the front bumper and delivers both a stylish design and high performance validated after multiple wind tunnel tests. Semi-glossy black coating, with STI emblem. Installation of a separately sold lip skirt (ST960204S292) allows an even higher level of air flow rectification and protects the front under spoiler from hitting the road surface.

* Installing the front under spoiler reduces the minimum clearance for the bumper approximately 40 mm.



FRONT UNDER SPOILER

SG517CA110 (E2410CA010, ST96020AS040) BLACK

This aerodynamic plastic spoiler is installed under the front bumper. It controls the flow of air into the front of the vehicle when driving at high speed and generates negative lift to increase the road gripping ability of the front tires. It has been designed to fit seamlessly with the front bumper and delivers both a stylish design and high performance validated after multiple wind tunnel tests. Semi-glossy black coating, with STI emblem. Installation of a separately sold lip skirt (ST960204S292) allows an even higher level of air flow rectification and protects the front under spoiler from hitting the road surface.

* Installing the front under spoiler reduces the minimum clearance for the bumper approximately 40 mm.



SIDE UNDER SPOILER

SG517CA210 (ST96030AS021) Semi-glossy black coating

This spoiler rectifies the flow of air from the front to the side of the vehicle and improves driving stability. It controls the flow of air under the vehicle body and prevents it from lifting the vehicle by diverting it toward the rear. It was designed under the assumption that the already available front under spoiler is also installed on the vehicle. These parts deliver optimal performance when used in combination.



STI PERFORMANCE PARTS

Aero/Exterior



REAR SIDE UNDER SPOILER

SG517CA300 (E5610CA100, ST96031AS000) BLACK

This aerodynamic part rectifies the flow of air from front to rear and optimally balances the aerodynamic performance throughout the vehicle. To ensure that the vehicle has the best possible appearance, the front and side under spoilers should also be installed. This gives the vehicle a more complete look.

- * This product is fixed to the vehicle with double sided tape, plastic clips and screws. Therefore, it is necessary to drill holes into the rear bumper.
- * Installing this part reduces clearance up to approximately 7 mm below the rear bumper.



DOOR HANDLE PROTECTOR

ST91099ST140 SILVER

This is a carbon-effect door-handle protector which protects the car from scratches and fingerprints when opening/closing doors. With the addition of the new silver color, it is now more suitable for use with silver or white light-colored car bodies.

Designed for a grip-type door handle, this not only serves as scratch prevention, but also adds a sporty touch to the door handle surroundings. It can be mounted along the dented form of the door and is pressure-bonded with powerful double-sided tape.

- * Chemical-based products such as waxes and coating agents or solvents including gasoline and thinners can cause stains and deformation of the product. If the cover comes into contact with such chemicals or solvents, clean the product immediately.
- * Please note that the product may detach or loosen if the car is cleaned under high-pressure or steam washing.
- * A set of 2 pieces of the same size for 1 vehicle (2 doors)
- * Carbon-effect PVC
- * The surface of the product may become cloudy when it is exposed to moisture such as rainwater for a long time. However, this is a characteristic of the material used (PVC) and is not abnormal. It will be restored when dry.



DOOR HANDLE PROTECTOR

ST91099ST060

This is a carbon-effect door-handle protector which protects the car from scratches and fingerprints when opening/closing doors. Designed for a grip-type door handle, this not only serves as scratch prevention, but also adds a sporty touch to the door handle surroundings. It can be mounted along the dented form of the door and is pressure-bonded with powerful double-sided tape.

- * Chemical-based products such as waxes and coating agents or solvents including gasoline and thinners can cause stains and deformation of the product. If the cover comes into contact with such chemicals or solvents, clean the product immediately.
- * Please note that the product may detach or loosen if the car is cleaned under high-pressure or steam washing.
- * A set of 2 pieces of the same size for 1 vehicle (2 doors)
- * Carbon-effect PVC

STI PERFORMANCE PARTS

Aero/Exterior



DRY CARBON REAR SPOILER

ST96050AS221

This is a dry carbon fiber rear spoiler installed also on 'Subaru BRZ tS GT-package' with special specifications. The spoiler angle can be set to one of two standard positions depending on driving conditions. After installation, the vehicle will have increased downforce toward the rear and improved stability at high speeds. (A front under spoiler must also be mounted.)

* This part can only be installed on vehicles without an existing rear spoiler.

* SUBARU genuine products (STAY ASSY TRK: 57522CA010) x 2 are required separately for all grades.



SKIRT LIP (CHERRY RED)

ST96020ST011 CHERRY RED

For installment on front under spoiler.

Installed on the end of the front under spoiler, this part reduces the Clf / Cd while also ensuring protection and giving the vehicle a stylish appearance.

* This product must be installed together with an STI front under spoiler.

* Compared to when the front under spoiler is installed, the ground clearance near the center of the front bumper is reduced by 20 mm.



GURNEY FLAP

ST96010AS000

This rubber aerodynamic part is attached to the rear edge of the rear spoiler for vehicles equipped with the "Aero package". After comprehensive wind tunnel testing by STI, this product has been developed to increase downforce by rectifying air flowing over the wing surface, without increasing air resistance (CD). This results in better grip for the driven wheels at high speeds.

* For installation, it is necessary to drill holes into the rear spoiler.



STI PERFORMANCE PARTS

Aero/Exterior



TRUNK SPOILER (MAT BLACK)

ST96050AS230 MAT BLACK

This is a dedicated SUBARU BRZ aerodynamic part which underwent several rounds of air tunnel testing on the actual vehicle to verify its performance. The product rectifies the air flow from front to rear at high speeds, and effectively generates negative lift to ensure the traction of the driven wheels. Also, the spoiler reduces the rear wheel lift (CLr) without any negative effects on the coefficient of drag (CD), which increases the force that pushes the rear axis to the ground surface at a speed of 100 km/h by approximately 60 N (approximately 6 kgf)* compared to a vehicle without the spoiler. This improves driving stability and rear tire grip. Installation together with a front under spoiler and lip skirt is recommended to improve the front and rear aerodynamic balance.

* Values measured by STI

* We recommend using this along with the front under spoiler and skirt lip.



DOOR MIRROR COVER (CHERRY RED) RH/LH

ST91054AS000

ST91054AS010

With this stylish Door Mirror Cover painted in cherry red, you can create a sporty appearance reminiscent of the NBR Challenge or SUPER GT racing cars. As this add-on is a genuine replacement part and the same shape as the original cover, no special work is required to install it on your car.

* The image shows how it looks when ST91054AS010 is fitted on a SUBARU BRZ STI Sport.

* This product is sold for the left and right-hand sides separately.

* The explanation of this product is for Japanese specification.



PIN STRIPE SET (SILVER/DARK GLAY)

ST91042ST000

ST91042ST010

This pin stripe decal accessory gives the side body a sharp appearance. The pin stripe provides a sporty look, highlighting the lines along the side body. You can choose between three different pin stripe colors to match the color shade of the body where the stripe is to be applied: silver, dark gray, or cherry red, an STI trademark color which fits any body color shade.



STI PERFORMANCE PARTS

Aero/Exterior



DRY CARBON REAR SPOILER

ST96050AS220

This is a dry carbon fiber rear spoiler installed also on 'Subaru BRZ tS GT-package' with special specifications. The spoiler angle can be set to one of two standard positions depending on driving conditions. After installation, the vehicle will have increased downforce toward the rear and improved stability at high speeds. (A front under spoiler must also be mounted.)

* This part can only be installed on vehicles without an existing rear spoiler.

* SUBARU genuine products (STAY ASSY TRK: 57522CA010) x 2 are required separately for all grades.



SKIRT LIP (CHERRY RED)

ST96020ST010 CHERRY RED

For installment on front under spoiler.

Installed on the end of the front under spoiler, this part reduces the Clf / Cd while also ensuring protection and giving the vehicle a stylish appearance.

* This product must be installed together with an STI front under spoiler.

* Compared to when the front under spoiler is installed, the ground clearance near the center of the front bumper is reduced by 20 mm.



SKIRT LIP

ST960204S292 FOR FRONT UNDER SPOILER

For installment on front under spoiler.

Installed on the end of the bottom of the front under spoiler, this part reduces the Clf / Cd while also ensuring protection and giving the vehicle a stylish appearance. Made from hardened rubber.

* This product must be installed together with an STI front under spoiler.

* When this product is installed, car height is lowered by 20mm below at the center.



STI PERFORMANCE PARTS

Aero/Exterior



TRUNK LID SPOILER (Non-Colour)

ST96050AS020 NON COLOUR

This is a dedicated SUBARU BRZ aerodynamic part which underwent several rounds of air tunnel testing on the actual vehicle to verify its performance. The product rectifies the air flow from front to rear at high speeds, and effectively generates negative lift to ensure the traction of the driven wheels. Also, the spoiler reduces the rear wheel lift (CLr) without any negative effects on the coefficient of drag (CD), which increases the force that pushes the rear axis to the ground surface at a speed of 100 km/h by approximately 60 N (approximately 6 kgf)* compared to a vehicle without the spoiler. This improves driving stability and rear tire grip. Installation together with a front under spoiler and lip skirt is recommended to improve the front and rear aerodynamic balance.

* Values measured by STI

* Separate painting is required to match the vehicle body color.

* The product in the image comes in WR blue pearl.



STI PERFORMANCE PARTS

Brake



DRILLED DISC F (For GT Brembo)

ST26390ST000

This brake disc rotor has been co-developed by STI and Brembo to realize stable braking performance and brake pad controllability. With its optimized shape, size, and arrangement of drilled holes, this rotor's cleaning performance on the brake pad surface and anti-fade performance at high temperatures has been enhanced. The resulting increase in stability of mu characteristics can maximize brake pad features.

This rotor enables strong stopping power and pad controllability for driving in sport conditions or on winding roads, and thus allows for a driver to further enjoy the sporty character of the SUBARU BRZ GT.

* This comes only one piece. 2 pieces are necessary per vehicle.

* Please use SUBARU BRZ GT (ZC) standard brake pads for Brembo.

* For cars not fitted with Brembo brakes, an STI drilled disc rotor (Front: ST26300ST000/ Rear: ST26700ST000) is available.



DRILLED DISC R (For GT Brembo)

ST26790ST000

This brake disc rotor has been co-developed by STI and Brembo to realize stable braking performance and brake pad controllability. With its optimized shape, size, and arrangement of drilled holes, this rotor's cleaning performance on the brake pad surface and anti-fade performance at high temperatures has been enhanced. The resulting increase in stability of mu characteristics can maximize brake pad features.

This rotor enables strong stopping power and pad controllability for driving in sport conditions or on winding roads, and thus allows for a driver to further enjoy the sporty character of the SUBARU BRZ GT.

* This comes only one piece. 2 pieces are necessary per vehicle.

* Please use SUBARU BRZ GT (ZC) standard brake pads for Brembo.

* For cars not fitted with Brembo brakes, an STI drilled disc rotor (Front: ST26300ST000/ Rear: ST26700ST000) is available.



STI PERFORMANCE PARTS

Brake



DRILLED DISC F

ST26300ST000

This is a brake disc rotor that provides stable braking performance, pad controllability and improved cooling capability.

Along with the drilling of the disc surface and the internal structure of the spiral vein, the cooling performance from high temperatures has improved by approximately 7%.

Owing to its cleaning performance on the brake pad surface and degassing effect at brake fade, this rotor stabilizes the mu characteristics of the pads. This and its structure with improved rigidity, create a synergetic effect to enhance pad controllability.

* This comes only one piece. 2 pieces are necessary per vehicle.

* It is recommended that this rotor is used together with the STI Brake Pad (Front: ST26296ST020 /Rear: ST26296ST030). (The rotor can also be combined with a standard pad.)

* The rotor cannot be installed on the GT model as it is fitted with Brembo calipers.

* Please confirm before purchase that the car to be fitted with the rotor has 16 inch discs in the front / 15 inch ventilated discs in the rear.



DRILLED DISC R

ST26700ST000

This is a brake disc rotor that provides stable braking performance, pad controllability and improved cooling capability.

Along with the drilling of the disc surface and the internal structure of the spiral vein, the cooling performance from high temperatures has improved by approximately 7%.

Owing to its cleaning performance on the brake pad surface and degassing effect at brake fade, this rotor stabilizes the mu characteristics of the pads. This and its structure with improved rigidity, create a synergetic effect to enhance pad controllability.

* This comes only one piece. 2 pieces are necessary per vehicle.

* It is recommended that this rotor is used together with the STI Brake Pad (Front: ST26296ST020 /Rear: ST26296ST030). (The rotor can also be combined with a standard pad.)

* The rotor cannot be installed on the GT model as it is fitted with Brembo calipers.

* When fitted to the RA Racing model, a vehicle will not conform to 'GAZOO RACING 86/BRZ Race' regulations.

* Please confirm before purchase that the car to be fitted with the rotor has 16 inch discs in the front / 15 inch ventilated discs in the rear.



STI PERFORMANCE PARTS

Brake



BRAKE PAD SET F

ST262964S020 F 17inch 4Pot Brake

These brake pads were developed with the aim of improving braking control, whether on a city road or winding roads.

This sports pad ensures suitable braking performance and improves fade resistance. The specifications were set to achieve a high level of balance between each component that contributes to the brake feeling required for street use, such as a direct pedal action feeling, reliability against fading, and low rotor aggressiveness.

* You may experience an increased load on the rotors when compared with the standard model.

* These brake pads may squeak depending on driving conditions or weather.

* For front 17-inch 4POT brakes (Brembo), for sports & street driving



BRAKE PAD SET R

ST262964S030 R 17inch 2Pot Brake

These brake pads were developed with the aim of improving braking control, whether on a city road or winding roads.

This sports pad ensures suitable braking performance and improves fade resistance. The specifications were set to achieve a high level of balance between each component that contributes to the brake feeling required for street use, such as a direct pedal action feeling, reliability against fading, and low rotor aggressiveness.

* You may experience an increased load on the rotors when compared with the standard model.

* These brake pads may squeak depending on driving conditions or weather.

* For rear 17-inch 2POT brakes (Brembo), for sports & street driving



BRAKE PAD SET F

ST26296ST020

These brake pads were developed with the aim of improving braking control, whether on a city road or winding roads.

This sports pad ensures suitable braking performance and improves fade resistance. The specifications were set to achieve a high level of balance between each component that contributes to the brake feeling required for street use, such as a direct pedal action feeling, reliability against fading, and low rotor aggressiveness.

* You may experience an increased load on the rotors when compared with the standard model.

* These brake pads may squeak depending on driving conditions or weather.

Brake

**BRAKE PAD SET R**

ST26296ST030

These brake pads were developed with the aim of improving braking control, whether on a city road or winding roads.

This sports pad ensures suitable braking performance and improves fade resistance. The specifications were set to achieve a high level of balance between each component that contributes to the brake feeling required for street use, such as a direct pedal action feeling, reliability against fading, and low rotor aggressiveness.

* You may experience an increased load on the rotors when compared with the standard model.

* These brake pads may squeak depending on driving conditions or weather.



STI PERFORMANCE PARTS

Engine/Transmission



OIL FILLER CAP

ST15257ZR011

This oil filler cap consists of a die-cast aluminum base that has been machined, and given a stylish resin cover.

Shape of the cap has been specially designed to allow for use even when wearing work gloves.

For times when the cap is difficult to remove, it contains special service holes under the resin cover that allow you to use the on-board wheel wrench to loosen the cap when it is too tight to do so by hand. The silver aluminum base with embossed black cap showing the cherry red STI logo adds "functional beauty" to the engine compartment.

* A gasket is not included. Please use the one attached to the filler cap you removed. If using a new gasket, be sure to use a genuine product for the corresponding model.

* If this product is installed on non-compatible models, there is the risk of deformation in the oil filler neck.

* The logo may not face the front.

* After installation, please ensure that this part does not come into contact with any surrounding components.



GEAR SHIFT LEVER ASSY

ST35010AS000

This short stroke gear shift lever assembly allows fast shifting that is perfect for sports car driving. It has a modified lever ratio and redesigned joint to provide a forward/backward stroke that is 4 mm shorter than standard. This enables rapid and direct gear shifting.

* During installation the stock shift and select lever boots must be replaced. The shift and select lever are included in the kit.



DISC CLUTCH

ST30100ZA000

This product uses organic materials with superior heat resistance as the facing material. This provides stable performance at all times, even during intense clutch operation. This product covers all uses, from street driving to sports driving.

* It is possible to install this part in combination with the standard flywheel and clutch cover.

* Some judder (vibration of the car body) may occur when engaging the clutch halfway, due to the heat resistance properties of the friction material that is used.

* There might be a slight increase in the rate of wear on the clutch disk.

STI PERFORMANCE PARTS

Engine/Transmission



COVER CLUTCH

ST30210ZA000

Clutch cover reinforced with pressure to get the most out of clutch disk performance. Engine power is transmitted to the drive system without loss.

* It is possible to install this part in combination with the standard flywheel and clutch cover.

* Some judder (vibration of the car body) may occur when engaging the clutch halfway, due to increased pressure force.

* There might be a slight increase in the rate of wear on the clutch disk due to increased pressure force.



DRIVE SHAFT KIT

ST28421AS100

The modified shaft diameter provides an increase in torsional rigidity and instantly transmits torque to the tires. It was designed to enable a feeling of superior response and direct traction. This design maintains the car balance and keeps the axis from shaking when the driver brakes or releases the accelerator during a turn. The special design suppresses unpleasant vibrations, thus improving ride comfort during regular use in the mid- to low-speed range. It also improves the feeling when shifting due to the increased rigidity of the drive line.



PERFORMANCE OIL FILTER

ST15208ST010

This is an oil filter with enhanced performance thanks to an increased filtration area of 15% compared with a conventional product. With dedicated materials to improve its particle collection performance, this filter also captures fine particles such as carbon and reduces pressure loss by 10%. With the resulting reduced pump loss, this filter is compatible with high viscosity oil, providing stable performance not only on roads but also on the circuit track. It is painted cherry red and features the STI logo.



STI PERFORMANCE PARTS

Interior/Others



SHIFT KNOB 6MT

SG117CA010

This premium shift knob features a combination of aluminum and dimpled genuine leather. The STI logo and shift pattern are stamped on the top of the knob. An optimal balance of materials, form, and weight has been selected with consideration for operational feel.

* The shift knob may become hot/cold from exposure to direct sunlight or fluctuations in temperature. The use of driving gloves is recommended.



SHIFT KNOB AT

SG117CA020

This shift knob features a new design for AT vehicles. A combination of aluminum and dimpled leather provides an appearance of premium quality. The shape was designed with consideration for operational feel.



BATTERY HOLDER(SILVER)

ST82182ST010 SILVER

This unique battery holder has a design motif reminiscent of the flexible tower bar. In addition to securely holding the bulky battery, it also adds an attractive highlight to the engine compartment.

* This product can be installed in many SUBARU vehicles that use a D-type battery, such as the LEGACY, LEVORG, WRX, IMPREZA, FORESTER, EXIGA, and SUBARU BRZ. Example battery model number: 80D23R (Compatible with batteries with "D" as the third digit.)

* We recommend installation be carried out by your local SUBARU dealer.

STI PERFORMANCE PARTS

Interior/Others



BATTERY HOLDER

ST82182ST000 CHERRY RED

This unique battery holder has a design motif reminiscent of the flexible tower bar. In addition to securely holding the bulky battery, it also adds an attractive highlight to the engine compartment.

* This product can be installed in many SUBARU vehicles that use a D-type battery, such as the LEGACY, LEVORG, WRX, IMPREZA, FORESTER, EXIGA, and SUBARU BRZ. Example battery model number: 80D23R (Compatible with batteries with "D" as the third digit.)

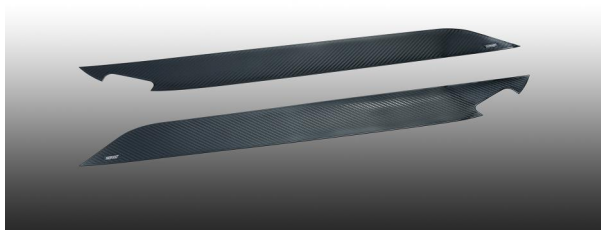
* We recommend installation be carried out by your local SUBARU dealer.



PUSH ENGINE SWITCH

ST83031ST031

Push-button ignition starter switch for models with keyless entry and push-button starter switches. The cherry red button with the STI logo in the center gives the interior a sporty appearance. Cherry red button, with STI logo in the center.



DOOR INNER PROTECTOR FOR BRZ (ZC)

STSG19101480

The inner part of the door can become scratched or dirty when shoes or bags contact the area as passengers get in and out of the vehicle. In order to avoid this, this protector is recommended.

In addition to its protective qualities, this product can also enhance the interior atmosphere with its sporty look.

The quality of this protector is guaranteed as it uses the same material as the popular product "Door Handle Protector".

By utilizing a thicker PVC material, this product is more durable than sticker-type protectors and is difficult to come off due to a strong-adhesive sheet used on its sticky side.

STI STI PERFORMANCE PARTS

Interior/Others

**SHIFT KNOB DURACON 6MT**

SG117CA000 (ST35022ST260)

This redesigned shift knob is made from the popular lightweight and tough Duracon(R)* material. The shape of the knob has been redesigned and refined to ensure reliable response during shifting. The shift pattern is shown on the carbon-based top to give a more sporty image.

* Duracon (R) is a registered trademark of Polyplastics Co., Ltd. in Japan and other countries.

* The shift knob may become hot/cold from exposure to direct sunlight or fluctuations in temperature. The use of driving gloves is recommended.