

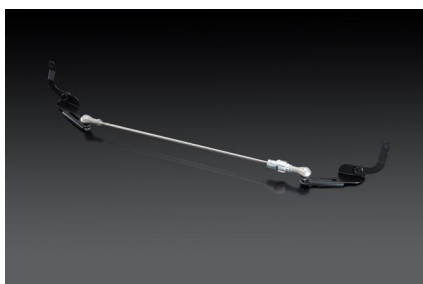


STI PERFORMANCE PARTS



FORESTER (SL)

Chassis/Body

**FLEXIBLE DRAW STIFFENER Rr**

ST20168VR000

In addition to increasing the rigidity at the front of the car with the FLEXIBLE V BAR or FLEXIBLE TOWER BAR, we recommend that you also install this product, to improve the followability of the rear of the car together with the FLEXIBLE V BAR or FLEXIBLE TOWER BAR.

By attaching this to the rear ends of the left and right rear frames (inside the rear bumper) and applying moderate tension, it corrects the bending of the chassis when the car is running. This leads to both initial agile steering and a smooth ride.

As this part improves the road-contact of the four wheels, driving stability during cornering increases, and thus a quick and straightforward steering feeling can be realized.

This product comes with a original sticker. (Sticker size: length 41 mm x width 36 mm)

* To install this product, removal and reattachment of the rear bumper face is required.

* The included sticker is a complimentary gift and not sold separately.

Please note that the sticker is not eligible for repair caused by a mistake in applying or damage in its use.

* The images illustrate how this product is installed on the LEVORG (VN type) and SUBARU BRZ (ZD type).

Please note that this product is actually installed inside the bumper and is not visible from the outside.

* On the LEVORG (VM type) this part cannot be installed together with the STI Rear Under Spoiler (part number: SG517VA360, SG517VA310) because the mounting location is the same.

* Cannot install together with other products(Ex. Hitch member) which attaches to the bumper beam.

Wheel



WHEEL SET 18inch (SILVER)

SG217SJ001 (B3110SJ001) SILVER 18x7.0J +48 PCD114.3

These cast aluminum wheels were made using the spinning production process to form the shape of the rims. This ensures a reduced weight with increased rigidity. Their design perfectly matches the new Forester body design and its colours.

* 4 pieces are necessary per vehicle.

* Including valve and center cap.

* The repair part number for the center cap: 28821FE141 x 4 pieces, and for the valve: ST28102ST010 x 4 pieces.

* The spinning process is a special method for producing aluminum wheels. It involves rapidly rotating the workpiece and pressing it until it conforms to the desired shape. This causes the aluminum molecules to be in close contact with each other, increasing strength while reducing weight and thickness.



WHEEL SET 18inch (GUNMETALLIC)

SG217SJ011 (B3110SJ011) GUNMETALLIC 18x7.0J/+48 PCD114.3
5HOLES

These cast aluminum wheels were made using the spinning production process to form the shape of the rims. This ensures a reduced weight with increased rigidity. Their design perfectly matches the new Forester body design and its colours.

* 4 pieces are necessary per vehicle.

* Including valve and center cap.

* The repair part number for the center cap: 28821FE141 x 4 pieces, and for the valve: ST28102ST010 x 4 pieces.

* The spinning process is a special method for producing aluminum wheels. It involves rapidly rotating the workpiece and pressing it until it conforms to the desired shape. This causes the aluminum molecules to be in close contact with each other, increasing strength while reducing weight and thickness.



WHEEL SET 18inch (BLACK)

SG217SJ021 (B3110SJ021) BLACK 18x7.0J/+48 PCD114.3 5HOLES

These cast aluminum wheels were made using the spinning production process to form the shape of the rims. This ensures a reduced weight with increased rigidity. Their design perfectly matches the new Forester body design and its colours.

* 4 pieces are necessary per vehicle.

* Including valve and center cap.

* The repair part number for the center cap: 28821FE141 x 4 pieces, and for the valve: ST28102ST010 x 4 pieces.

* The spinning process is a special method for producing aluminum wheels. It involves rapidly rotating the workpiece and pressing it until it conforms to the desired shape. This causes the aluminum molecules to be in close contact with each other, increasing strength while reducing weight and thickness.

 Wheel

**SECURITY WHEEL NUT SET**

ST28170ST060 GUN METALLIC

Set of 16 lug nuts and 4 lock nuts. Enhanced security with a more reliable locking mechanism. 3-layer nickel plated hard steel, with chrome finish to prevent rust. Gun metal finish with laser engraved STI logo. Special tool included (McGuard). M12x1.25mm

**STI VALVE CAP SET**

ST28102ST030 Silver

These wheel valve caps are light weight with a design that features a knurled finish on machined aluminum to prevent slippage. Remove the standard valve caps to install these. A silver alumite treatment has been applied to the surfaces of these valve caps to improve resistance to weather and match the color of aluminum wheels. The hexagonal heads of the valve caps have rounded tops, and a cherry red STI logo is stamped on the embossed area.

- 4-piece Set
- Silver Alumite Treatment

*When storing tires and wheels, we recommend that valve caps be stored separately to prevent sticking.

**STI VALVE CAP SET(Black)**

ST28102Z2000 Black

These wheel valve caps are light weight with a design that features a knurled finish on machined aluminum to prevent slippage. Remove the standard valve caps to install these. A black alumite treatment has been applied to the surfaces of these valve caps to improve resistance to weather and match the color of aluminum wheels. The hexagonal heads of the valve caps have rounded tops, and a cherry red STI logo is stamped on the embossed area.

- 4-piece Set
- Black Alumite Treatment

*When storing tires and wheels, we recommend that valve caps be stored separately to prevent sticking.

STI PERFORMANCE PARTS

Aero/Exterior



FRONT UNDER SPOILER(BK)

SG517SL000 (E2410SL000) CRYSTAL BLACK SILICA

This is an aerodynamic control part made of resin, installed on the lower section of the front bumper. It optimizes the airflow received at the front during high-speed driving, generating downforce to enhance the front tires' contact with the ground.

The shape, built with a sense of unity with the front bumper has been verified for performance in repeated CFD analysis and wind tunnel experiments to achieve both good design and performance.



FRONT UNDER SPOILER(CR)

SG517SL010 (E2410SL010) CHERRY RED

This is an aerodynamic control part made of resin, installed on the lower section of the front bumper. It optimizes the airflow received at the front during high-speed driving, generating downforce to enhance the front tires' contact with the ground.

The shape, built with a sense of unity with the front bumper has been verified for performance in repeated CFD analysis and wind tunnel experiments to achieve both good design and performance.



SIDE UNDER SPOILER(BK)

SG517SL100 (E2610SL100) CRYSTAL BLACK SILICA

This is an aerodynamic control part that optimizes the airflow from the front of the vehicle toward the body sides and rear sides. It suppresses the vehicle's roll motion and improves driving stability.

STI PERFORMANCE PARTS

Aero/Exterior



SIDE UNDER SPOILER(CR)

SG517SL110 (E2610SL110) CHERRY RED

This is an aerodynamic control part that optimizes the airflow from the front of the vehicle toward the body sides and rear sides. It suppresses the vehicle's roll motion and improves driving stability.



REAR SIDE UNDER SPOILER(BLACK)

SG517SL200 (E5610SL200) CRYSTAL BLACK SILICA

This is an aerodynamic control part that optimizes the airflow around the rear of the vehicle. It suppresses the vehicle's roll motion and improves driving stability.



REAR SIDE UNDER SPOILER(CR)

SG517SL210 (E5610SL210) CHERRY RED

This is an aerodynamic control part that optimizes the airflow around the rear of the vehicle. It suppresses the vehicle's roll motion and improves driving stability.

STI PERFORMANCE PARTS

Aero/Exterior



ROOF SPOILER

SG517SL300 (E7210SL300) CRYSTAL BLACK SILICA

It features a vortex generator shape that optimizes airflow around the rear of the vehicle. By reducing lift at the rear, it contributes to prompt and accurate steering response and improves overall driving stability.



TAIL GATE GARNISH CHERRY RED

ST91042S2000 CHERRY RED

This is a single-color garnish in cherry red, to be attached to the lower part of the tailgate. It makes your car more sporty.

* The surface may become white or cloudy if exposed to moisture such as rainwater for an extended period of time. However, this is a characteristic of the material (Hyboscal=PVC) and is not abnormal. The color will return to normal when dry.

* Cannot be installed together with the SUBARU genuine REAR GATE DECAL(J1217SL020).



TAIL GATE GARNISH BLACK

ST91042S2010 BLACK

This is a single-color garnish in carbon-look black, to be attached to the lower part of the tailgate. It makes your car more sporty.

* The surface may become white or cloudy if exposed to moisture such as rainwater for an extended period of time. However, this is a characteristic of the material (Hyboscal=PVC) and is not abnormal. The color will return to normal when dry.

* Cannot be installed together with the SUBARU genuine REAR GATE DECAL(J1217SL020).

Aero/Exterior

**DOOR HANDLE PROTECTOR**

ST91099ST040

This is a carbon-effect door-handle protector which protects the car from scratches and fingerprints when opening/closing doors. Designed for a grip-type door handle, this not only serves as scratch prevention, but also adds a sporty touch to the door handle surroundings. It can be mounted along the dented form of the door and is pressure-bonded with powerful double-sided tape.

* Chemical-based products such as waxes and coating agents or solvents including gasoline and thinners can cause stains and deformation of the product. If the cover comes into contact with such chemicals or solvents, clean the product immediately.

* Please note that the product may detach or loosen if the car is cleaned under high-pressure or steam washing.

* A set of 4 pieces of the same size for 1 vehicle (4 doors)

* Carbon-effect PVC

* When fitting the protector to an IMPREZA/SUBARU XV, please note that part numbers for current models (GK/GT) and former models (GP/GJ) are different.

**DOOR HANDLE PROTECTOR**

ST91099ST120 SILVER

This is a carbon-effect door-handle protector which protects the car from scratches and fingerprints when opening/closing doors.

With the addition of the new silver color, it is now more suitable for use with silver or white light-colored car bodies.

Designed for a grip-type door handle, this not only serves as scratch prevention, but also adds a sporty touch to the door handle surroundings. It can be mounted along the dented form of the door and is pressure-bonded with powerful double-sided tape.

* Chemical-based products such as waxes and coating agents or solvents including gasoline and thinners can cause stains and deformation of the product. If the cover comes into contact with such chemicals or solvents, clean the product immediately.

* Please note that the product may detach or loosen if the car is cleaned under high-pressure or steam washing.

* A set of 4 pieces of the same size for 1 vehicle (4 doors)

* Carbon-effect PVC

* When fitting the protector to an IMPREZA/SUBARU XV, please note that part numbers for current models (GK/GT) and former models (GP/GJ) are different.

* The surface of the product may become cloudy when it is exposed to moisture such as rainwater for a long time. However, this is a characteristic of the material used (PVC) and is not abnormal. It will be restored when dry.

STI PERFORMANCE PARTS

Engine/Transmission



OIL FILLER CAP

ST15257ZR011

This oil filler cap consists of a die-cast aluminum base that has been machined, and given a stylish resin cover.

Shape of the cap has been specially designed to allow for use even when wearing work gloves.

For times when the cap is difficult to remove, it contains special service holes under the resin cover that allow you to use the on-board wheel wrench to loosen the cap when it is too tight to do so by hand. The silver aluminum base with embossed black cap showing the cherry red STI logo adds "functional beauty" to the engine compartment.

* A gasket is not included. Please use the one attached to the filler cap you removed. If using a new gasket, be sure to use a genuine product for the corresponding model.

* If this product is installed on non-compatible models, there is the risk of deformation in the oil filler neck.

* The logo may not face the front.

* After installation, please ensure that this part does not come into contact with any surrounding components.



RADIATOR CAP

ST45137ST001

Opening value pressure changed from 108kPa(0.108MPa)standard value to 130kPa(0.13MPa). This radiator cap reduces the risk of overflow caused by the thermal expansion of coolant water even under severe conditions such as sports driving or circuit driving. Opening valve pressure unit changed from 'bar' to 'Mpa'.

* When replacing this product, pay careful attention to leakage of water from the piping, and be sure to inspect the coolant water at the start of work.

STI PERFORMANCE PARTS

Interior/Others

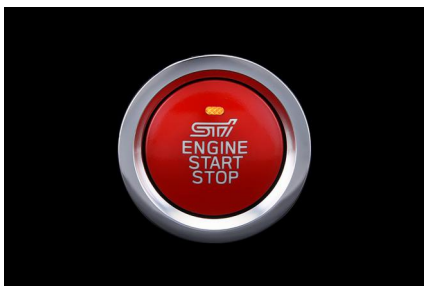


SHIFT KNOB (CVT)

SG117FN001 (C1010FN001)

The main grip area is finished in genuine leather, while the other resin components are treated with a metallic coating. The STI logo is elegantly embossed for a refined touch.

The top section of the body features premium kip leather, which is also used on the back side. Accented with cherry red stitching, it enhances the sporty feel and tactile quality, delivering a smooth and confident grip.



PUSH ENGINE SWITCH

ST83031ST051

Push-button ignition starter switch for models with keyless entry and push-button starter switches. The cherry red button with the STI logo in the center gives the interior a sporty appearance.

* For cars with keyless access and push-button start.



BATTERY HOLDER

ST82182ST000 CHERRY RED

This unique battery holder has a design motif reminiscent of the flexible tower bar. In addition to securely holding the bulky battery, it also adds an attractive highlight to the engine compartment.

* This product can be installed in many SUBARU vehicles that use a D-type battery, such as the LEGACY, LEVORG, WRX, IMPREZA, FORESTER, EXIGA, and SUBARU BRZ. Example battery model number: 80D23R (Compatible with batteries with "D" as the third digit.)

* We recommend installation be carried out by your local SUBARU dealer.

Interior/Others

**BATTERY HOLDER(SILVER)**

ST82182ST010 SILVER

This unique battery holder has a design motif reminiscent of the flexible tower bar. In addition to securely holding the bulky battery, it also adds an attractive highlight to the engine compartment.

* This product can be installed in many SUBARU vehicles that use a D-type battery, such as the LEGACY, LEVORG, WRX, IMPREZA, FORESTER, EXIGA, and SUBARU BRZ. Example battery model number: 80D23R (Compatible with batteries with "D" as the third digit.)

* We recommend installation be carried out by your local SUBARU dealer.